

ILLUSTRATED PARTS LIST

for the

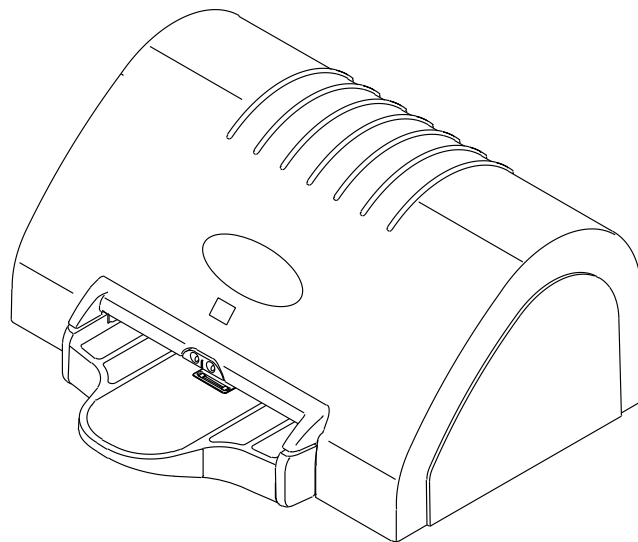
KODAK POINT-OF-CARE CR 120/140 SYSTEM

Service Codes: 3607, 3605



Important

Qualified service personnel must repair this equipment.



H212_0008GC

Restricted

PLEASE NOTE The information contained herein is based on the experience and knowledge relating to the subject matter gained by Carestream Health, Inc. prior to publication.

No patent license is granted by this information.

Carestream Health, Inc. reserves the right to change this information without notice, and makes no warranty, express or implied, with respect to this information. Carestream Health shall not be liable for any loss or damage, including consequential or special damages, resulting from any use of this information, even if loss or damage is caused by Carestream Health's negligence or other fault.



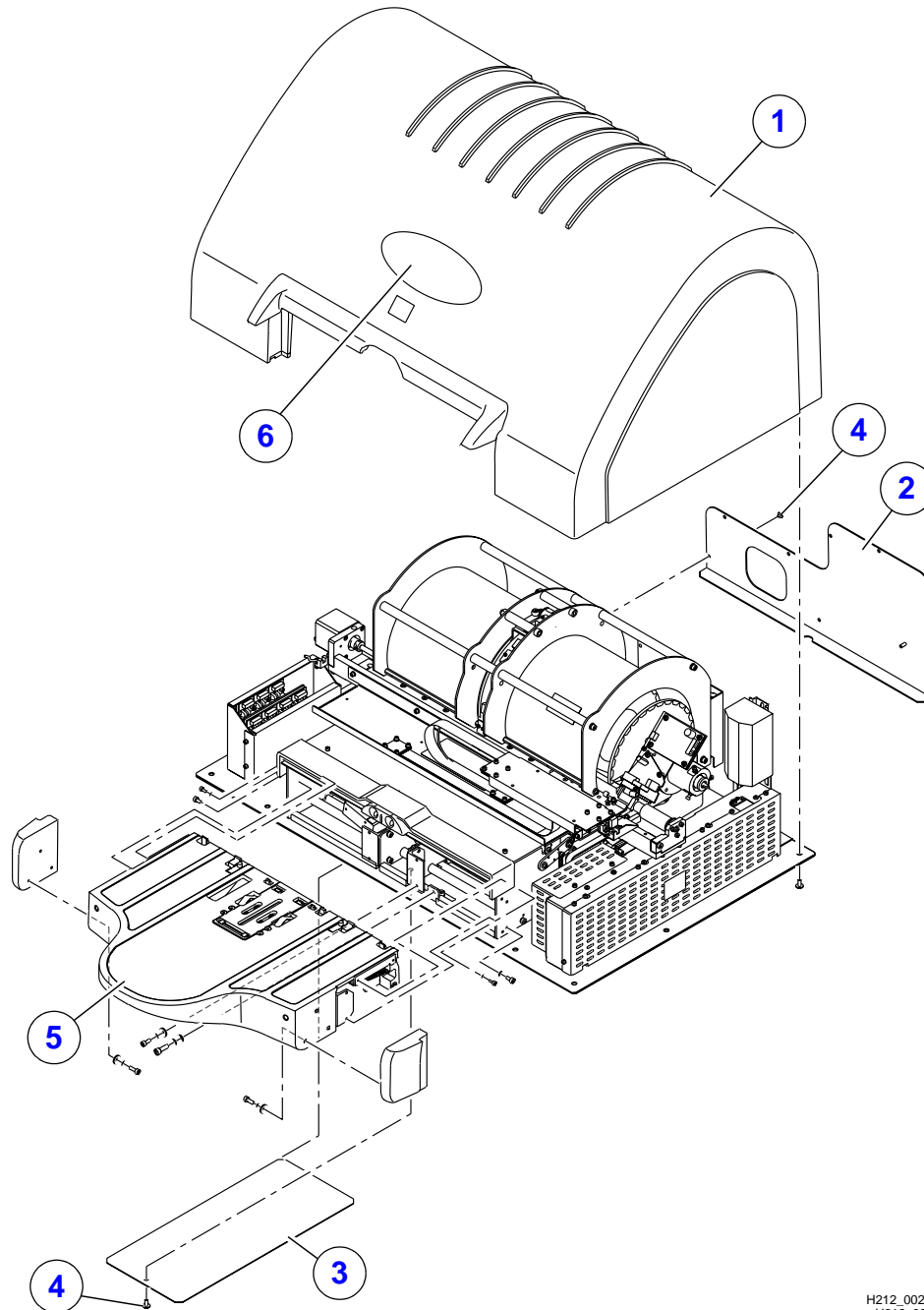
This equipment includes parts and assemblies sensitive to damage from electrostatic discharge. Use caution to prevent damage during all service procedures.

Table of Contents

Description	Page
Illustrated Parts List	3
COVERS	3
CIRCUIT BOARDS	5
OPTICS	6
MOTORS	7
POWER SUPPLIES	8
SENSORS	9
AUTOLOOP	11
CABLES	12
MISCELLANEOUS	13
Numerical Index	14
Alphabetical Index	16
Publication History	19

Section 1: Illustrated Parts List

Figure 1 COVERS

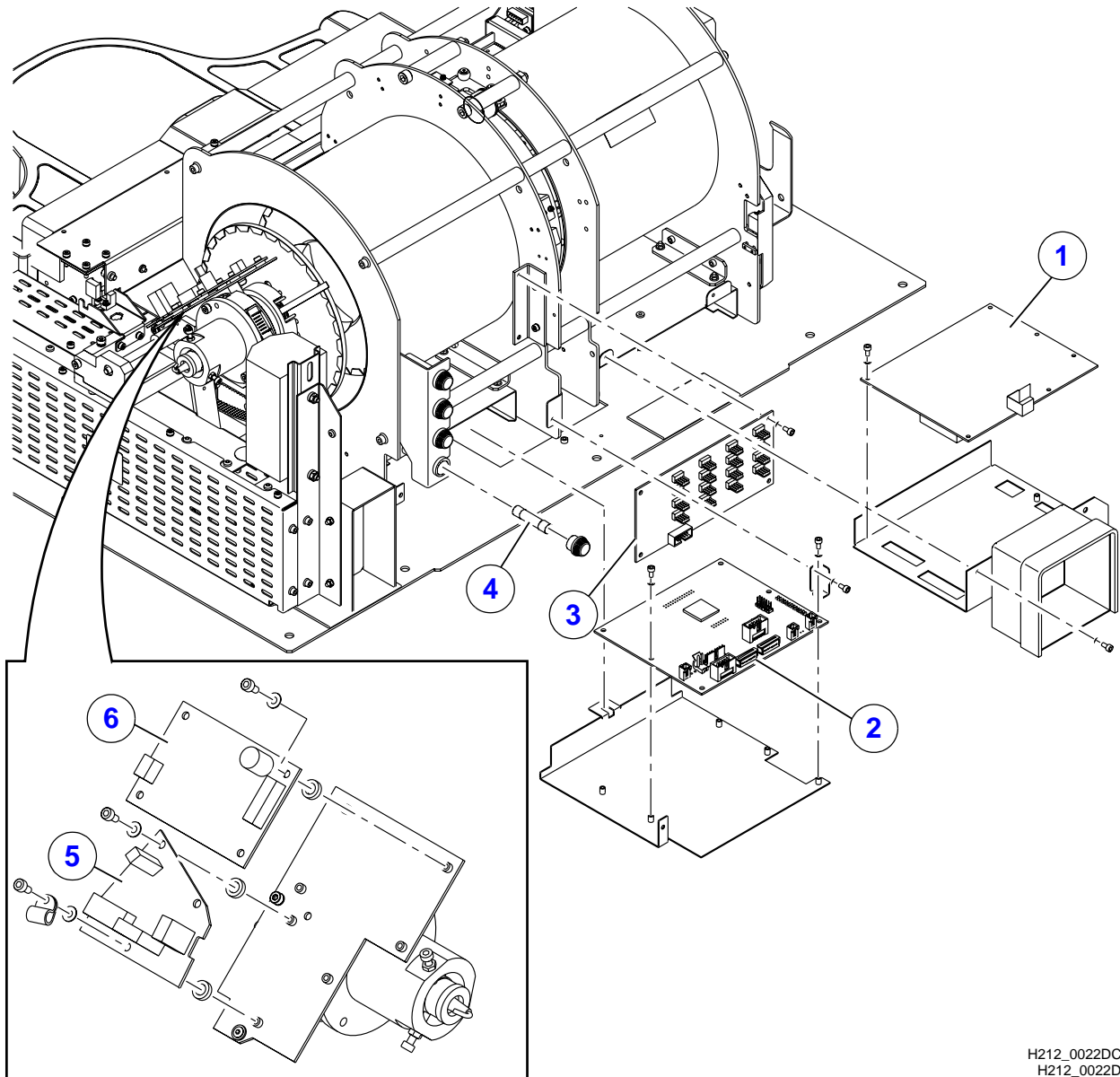


H212_0020ECA
H212_0020EC

Figure 1 COVERS

Item	Part No.	Description	Quantity	Notes
1	SK255004	COVER - top	1	Includes Item 6 for the CR 120/140 and CR 260 Systems.
2	SK250042	COVER - back	1	
3	SK250043	COVER - bottom	1	
4	SK250036	SCREW - set	1	Includes all the SCREWS for the COVERS.
5	SK260026	TRAY AY	1	
6	---	LABEL	1	

Figure 2 CIRCUIT BOARDS

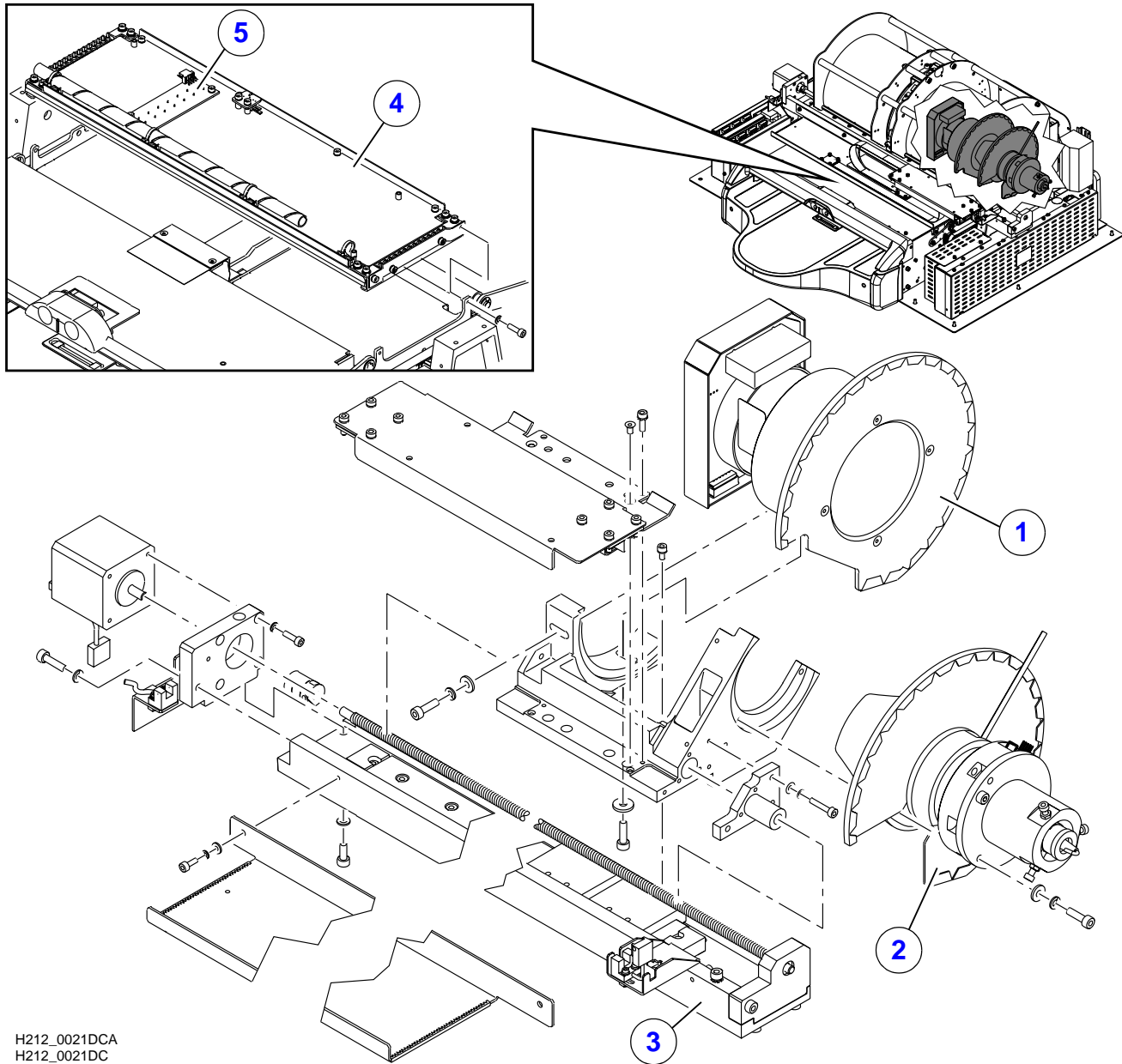


H212_0022DCA
H212_0022DC

Figure 2 CIRCUIT BOARDS

Item	Part No.	Description	Quantity	Notes
1	SK255001	CIRCUIT BOARD - USB 2.0, 120/140	1	
2	SK255006	CIRCUIT BOARD - motion	1	
3	SK250002	CIRCUIT BOARD - sensor	1	
4	SK250026	FUSE - set	1	Includes all the FUSES for the system.
5	SK250004	CIRCUIT BOARD - laser board	1	
6	SK250025	CIRCUIT BOARD - motor, rotation	1	

Figure 3 OPTICS

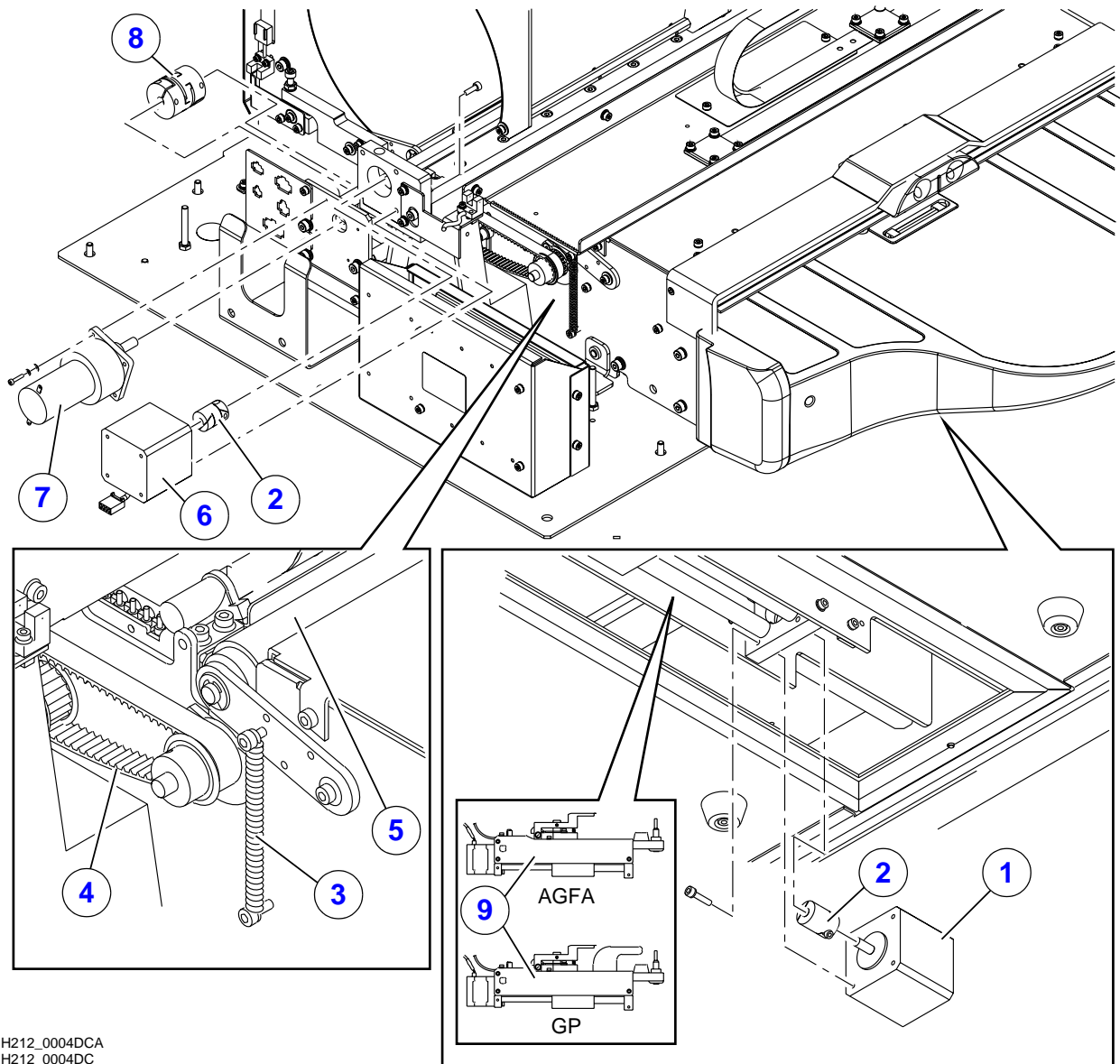


H212_0021DCA
H212_0021DC

Figure 3 OPTICS

Item	Part No.	Description	Quantity	Notes
1	SK250023	PHOTOMULTIPLIER AY	1	
2	SK250024	OPTICAL HEAD	1	
3	SK240008	LINEAR AY	1	
4	SK255018	LAMP - erase	1	Includes the ERASE LAMP SENSOR SK255003.
5	SK255003	SENSOR - erase lamp	1	

Figure 4 MOTORS

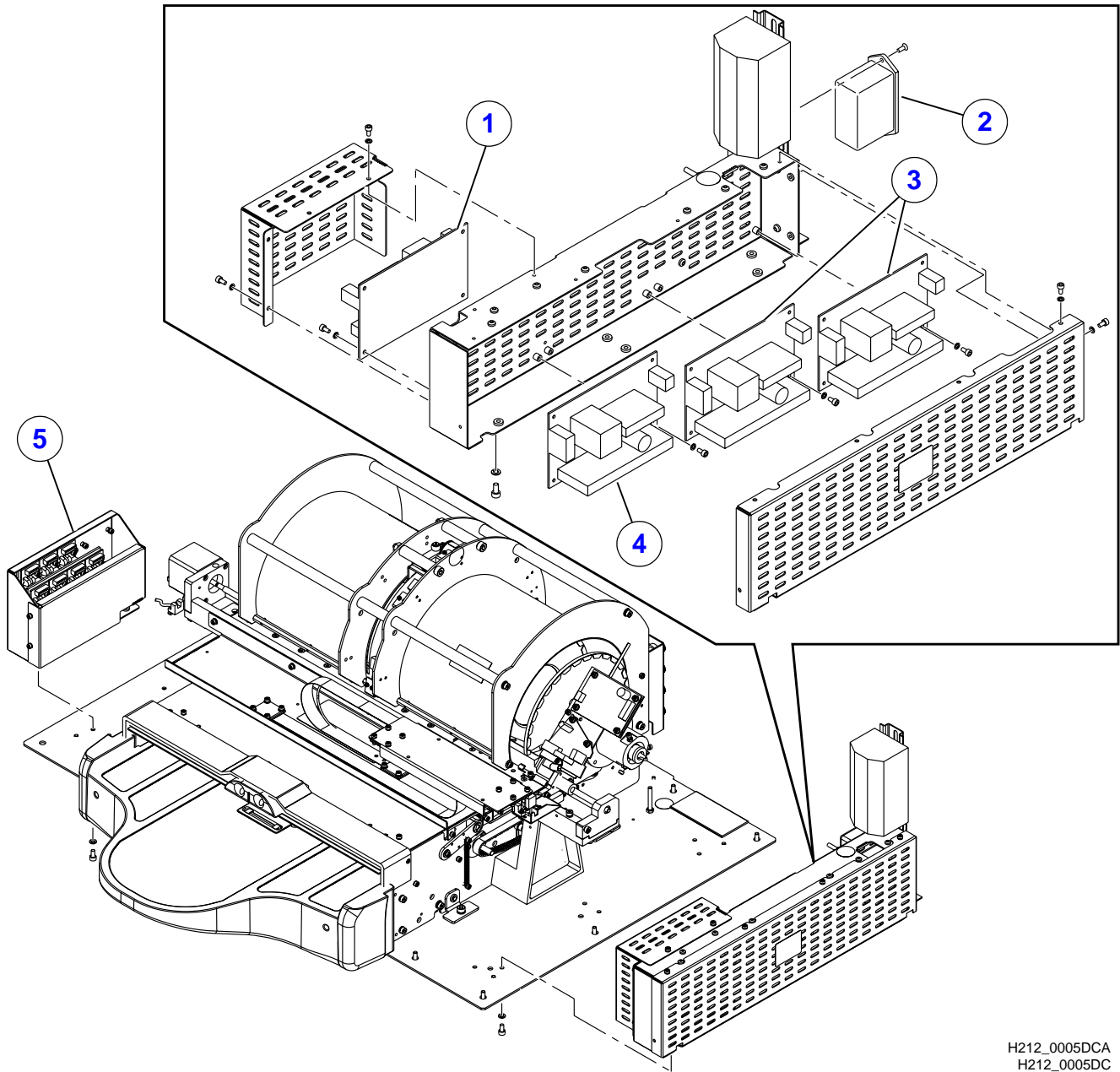


H212_0004DCA
H212_0004DC

Figure 4 MOTORS

Item	Part No.	Description	Quantity	Notes
1	SK250007	MOTOR - stepper, loader	1	
2	SK250034	COUPLING - stepper motor	2	
3	SK240044	SPRING - set	1	Includes 4 springs.
4	SK250045	BELT - timing roller drive	1	Includes 2 BELTS
5	SK250046	ROLLER - set	1	Includes: • 4 ROLLERS • 2 TIMING BELTS
6	SK250006	MOTOR - stepper, linear	1	
7	SK250005	MOTOR - roller	1	
8	SK250033	COUPLING - roller motor	1	
9	SK000117	LOADER AY - AGFA screens	1	AGFA screens
	SK000118	LOADER AY - GP screens	1	GP screens

Figure 5 POWER SUPPLIES

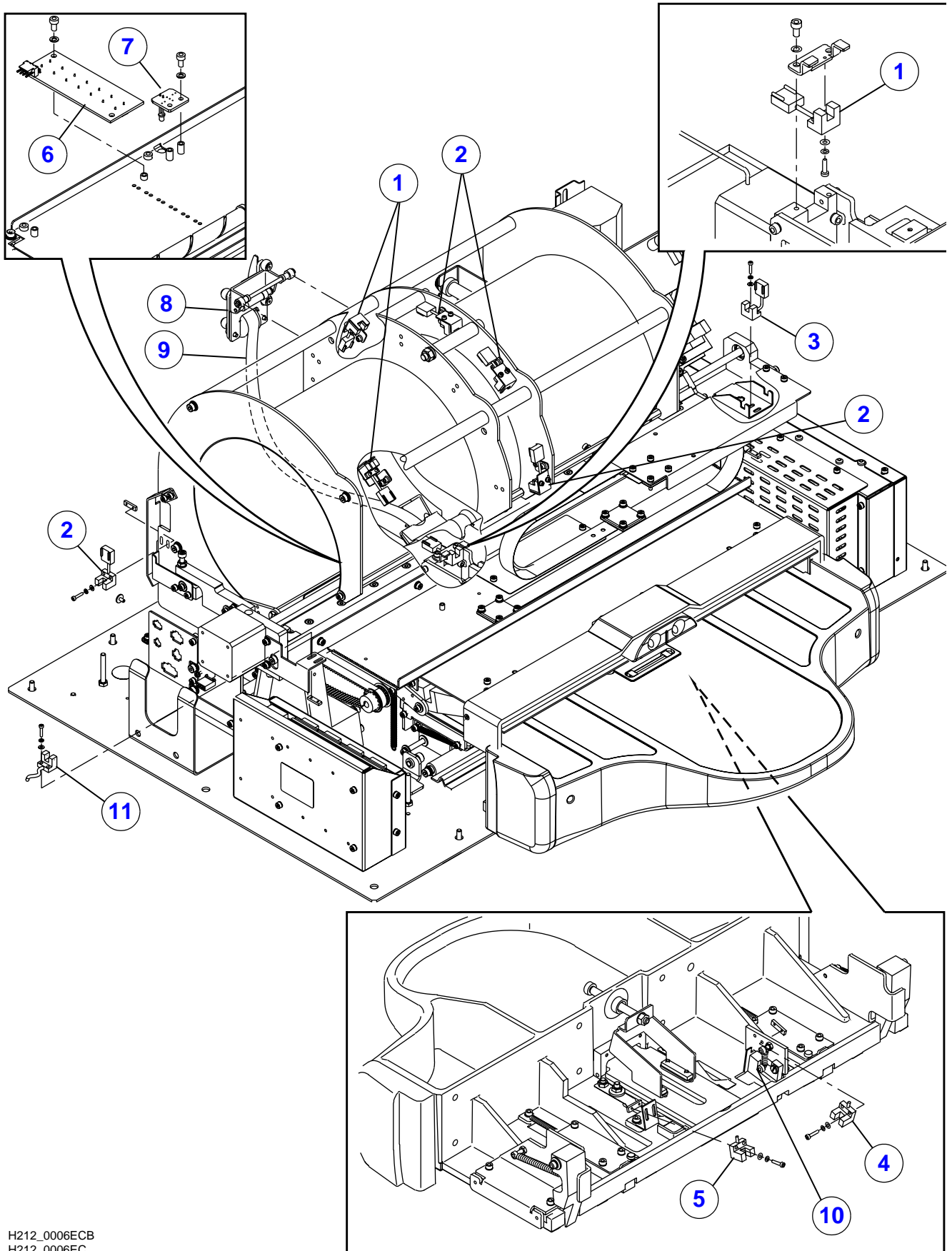


H212_0005DCA
H212_0005DC

Figure 5 POWER SUPPLIES

Item	Part No.	Description	Quantity	Notes
1	SK250037	POWER SUPPLY - 5 V DC, 12 V DC	1	
2	SK250035	SWITCH - power, line filter, 120/140	1	
3	SK250038	POWER SUPPLY - 15 V DC	2	
4	SK250039	POWER SUPPLY - 12 V DC	1	
5	SK250019	INVERTER - erase lamps	1	

Figure 6 SENSORS

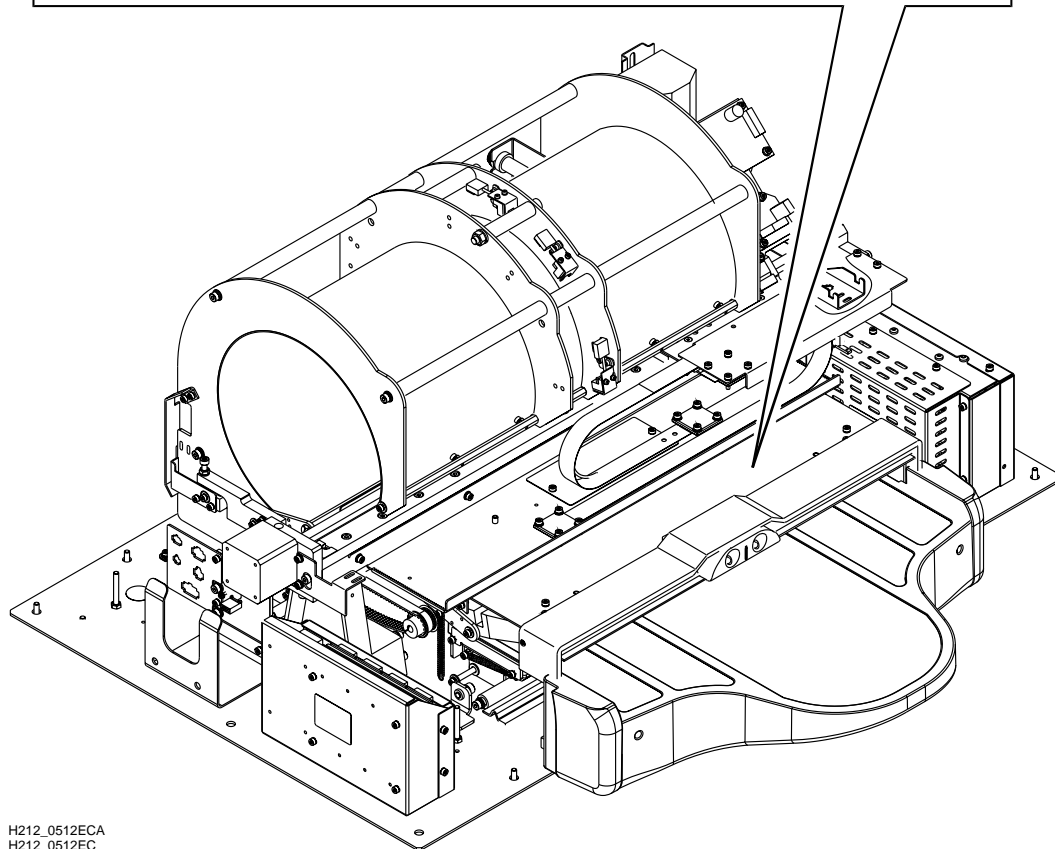
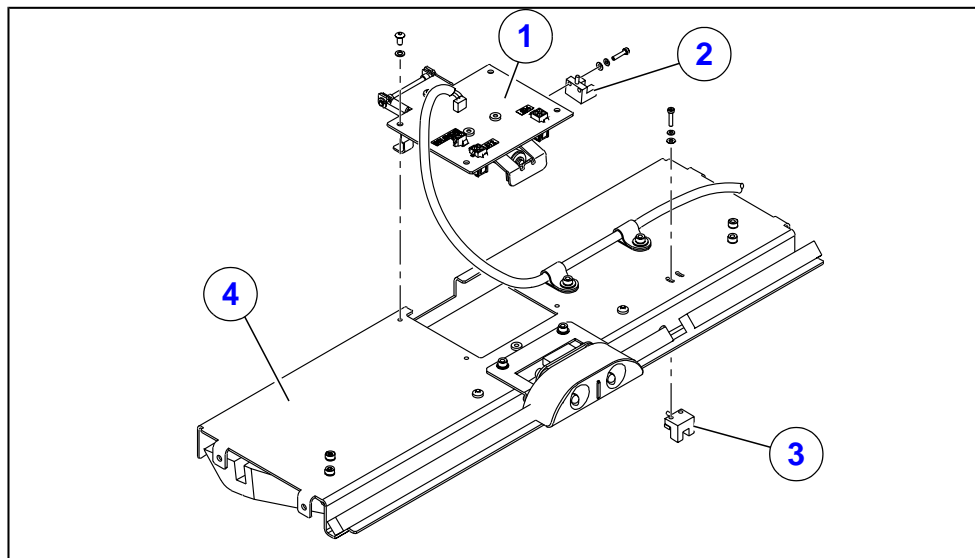


H212_0006ECB
H212_0006EC

Figure 6 SENSORS

Item	Part No.	Description	Quantity	Notes
1	SK250011	SENSOR - locating Z0 J505, locating Z1 J506, and loader back position J508	3	
2	SK250010	SENSOR - locating Z2 J507, locating Z3 J501, locating Z4 J502, and roller J509	4	
3	SK250015	SENSOR - R-origin J515	1	
4	SK250051	SENSOR AY - cassette present, J513	1	
5	SK250052	SENSOR - cassette lock, J514	1	
6	SK255003	SENSOR - erase lamp	1	
7	SK000114	SENSOR - W-zero, J511	1	Includes: <ul style="list-style-type: none"> • SEND and RECEIVE SENSOR • CABLE • SPRING • FILTER CAP
8	SK200027	SPRING AY - plate guide	1	Includes the SPRING.
9	SK200025	SPRING - plate guide	1	
10	SK000036	FLAG - cassette present, 24 mm	1	
11	SK250016	SENSOR - L-origin J516	1	

Figure 7 AUTOLOOP

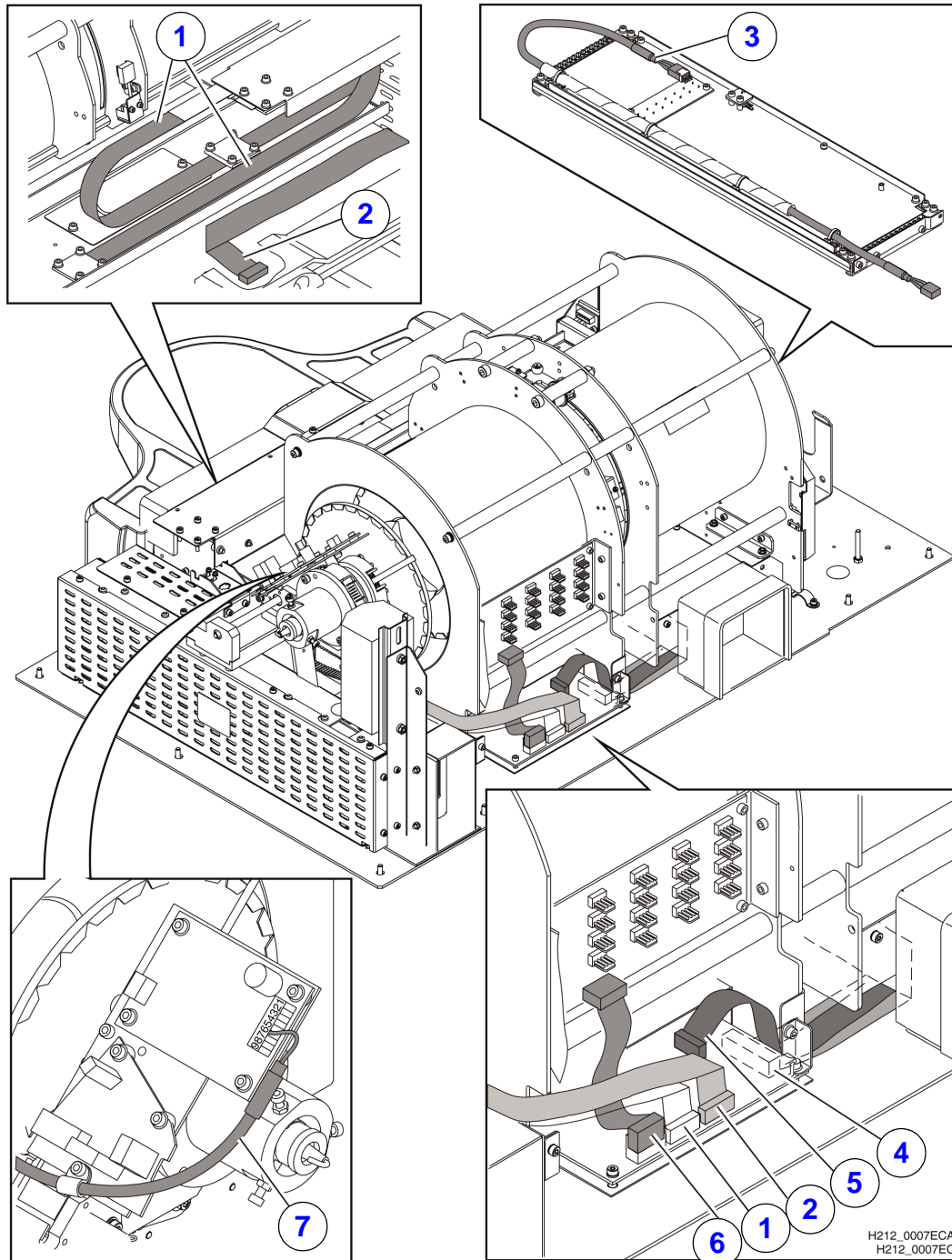


H212_0512ECA
H212_0512EC

Figure 7 AUTOLOOP

Item	Part No.	Description	Quantity	Notes
1	SK000107	SOLENOID AY	1	Includes SENSOR - solenoid.
2	---	SENSOR - solenoid	1	
3	---	SENSOR - 15 x 30 cassette	1	
4	SK000002	AUTOLOOP KEY AY - complete	1	
---	SK000003	AUTOLOOP UPGRADE 2.1.2 - kit	1	
---	SK000014	AUTOLOOP UPGRADE 2.4 - kit	1	
---	SK000034	AUTOLOOP UPGRADE 2.5 - kit	1	

Figure 8 CABLES

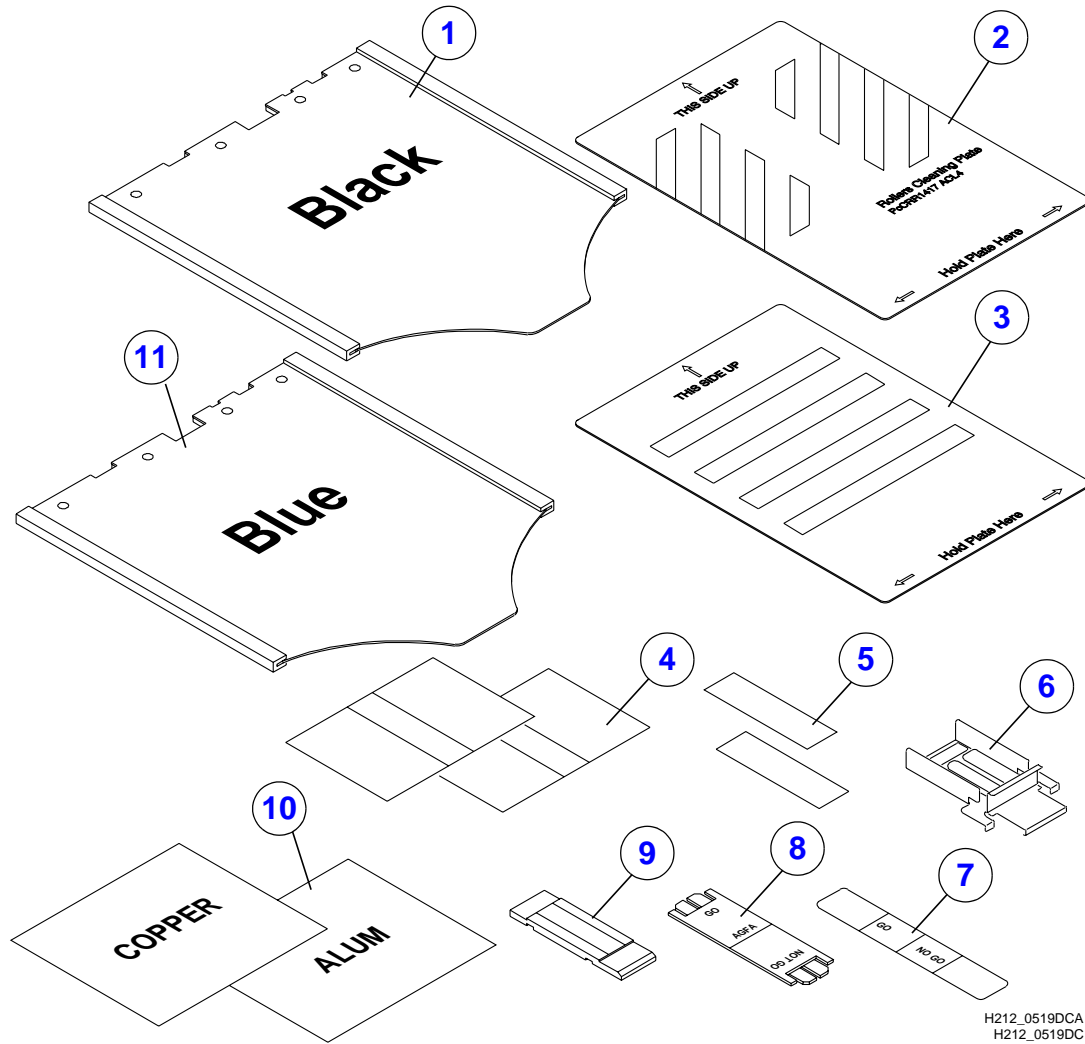


H212_0007ECA
H212_0007EC

Figure 8 CABLES

Item	Part No.	Description	Quantity	Notes
1	SK250027	CABLE - flex, 1300 mm, motion to laser, USB to PMT	1	
2	SK250028	CABLE - flex, motion to LED panel	1	
3	SK250040	CABLE - erase lamp sensors to INVERTER	1	
4	SK255005	CABLE - flat, motion to USB	1	
5	SK250031	CABLE - motion to INVERTER	1	
6	SK250030	CABLE - sensor to motion	1	
7	SK250041	CABLE - laser rotation	1	

Figure 9 MISCELLANEOUS



H212_0519DCA
H212_0519DC

Figure 9 MISCELLANEOUS

Item	Part No.	Description	Quantity	Notes
1	TLAC094601	TRAY - roller cleaning plate, black	1	Non-autoloop
2	AC094602	PLATE - roller cleaning	2	Non-autoloop
3	AC000111	PLATE - roller cleaning	2	Autoloop system
4	TLSK000041	SHEET - go/no go roller adjustment	1	Package holds 2
5	TLSK000109	GAUGE - loop solenoid	1	Autoloop system
6	TLSK250056	SCREEN EXTRACTION TOOL	1	
7	TLSK000024	GAUGE - trolley roller	1	Pusher to roller
8	TLSK000017	GAUGE - hoop height, mylar	1	Non-autoloop
9	TLSK000016	GAUGE - tray	1	
10	TL5259	CALIBRATION FILTERS - copper/aluminum	1	
11	AC000110	TRAY - roller cleaning plate, blue	1	Autoloop system
---	SK250036	SCREW - set	1	
---	SK250026	FUSE - set	1	
---	AC085003	SHIPPING CRATE	1	
---	ST095830-02	LABEL - barcode cassette, 14 x 17	1	
---	ST095850-02	LABEL - barcode cassette, 10 x 12	1	
---	ST095870-02	LABEL - barcode cassette, 8 x 10	1	

Section 2: Numerical Index

Numerical Index

Part No.	Description	Figure No.
---	LABEL	1
---	SENSOR - 15 x 30 cassette	7
---	SENSOR - solenoid	7
AC000110	TRAY - roller cleaning plate, blue	9
AC000111	PLATE - roller cleaning	9
AC085003	SHIPPING CRATE	9
AC094602	PLATE - roller cleaning	9
SK000002	AUTOLOOP KEY AY - complete	7
SK000003	AUTOLOOP UPGRADE 2.1.2 - kit	7
SK000014	AUTOLOOP UPGRADE 2.4 - kit	7
SK000034	AUTOLOOP UPGRADE 2.5 - kit	7
SK000036	FLAG - cassette present, 24 mm	6
SK000107	SOLENOID AY	7
SK000114	SENSOR - W-zero, J511	6
SK000117	LOADER AY - AGFA screens	4
SK000118	LOADER AY - GP screens	4
SK200025	SPRING - plate guide	6
SK200027	SPRING AY - plate guide	6
SK240008	LINEAR AY	3
SK240044	SPRING - set	4
SK250002	CIRCUIT BOARD - sensor	2
SK250004	CIRCUIT BOARD - laser board	2
SK250005	MOTOR - roller	4
SK250006	MOTOR - stepper, linear	4
SK250007	MOTOR - stepper, loader	4
SK250010	SENSOR - locating Z2 J507, locating Z3 J501, locating Z4 J502, and roller J509	6
SK250011	SENSOR - locating Z0 J505, locating Z1 J506, and loader back position J508	6
SK250015	SENSOR - R-origin J515	6
SK250016	SENSOR - L-origin J516	6
SK250019	INVERTER - erase lamps	5
SK250023	PHOTOMULTIPLIER AY	3
SK250024	OPTICAL HEAD	3
SK250025	CIRCUIT BOARD - motor, rotation	2
SK250026	FUSE - set	2, 9
SK250027	CABLE - flex, 1300 mm, motion to laser, USB to PMT	8
SK250028	CABLE - flex, motion to LED panel	8
SK250030	CABLE - sensor to motion	8
SK250031	CABLE - motion to INVERTER	8
SK250033	COUPLING - roller motor	4
SK250034	COUPLING - stepper motor	4
SK250035	SWITCH - power, line filter, 120/140	5
SK250036	SCREW - set	1, 9
SK250037	POWER SUPPLY - 5 V DC, 12 V DC	5
SK250038	POWER SUPPLY - 15 V DC	5

Numerical Index

Part No.	Description	Figure No.
SK250039	POWER SUPPLY - 12 V DC	5
SK250040	CABLE - erase lamp sensors to INVERTER	8
SK250041	CABLE - laser rotation	8
SK250042	COVER - back	1
SK250043	COVER - bottom	1
SK250045	BELT - timing roller drive	4
SK250046	ROLLER - set	4
SK250051	SENSOR AY - cassette present, J513	6
SK250052	SENSOR - cassette lock, J514	6
SK255001	CIRCUIT BOARD - USB 2.0, 120/140	2
SK255003	SENSOR - erase lamp	3.6
SK255004	COVER - top	1
SK255005	CABLE - flat, motion to USB	8
SK255006	CIRCUIT BOARD - motion	2
SK255018	LAMP - erase	3
SK260026	TRAY AY	1
ST095830-02	LABEL - barcode cassette, 14 x 17	9
ST095850-02	LABEL - barcode cassette, 10 x 12	9
ST095870-02	LABEL - barcode cassette, 8 x 10	9
TL5259	CALIBRATION FILTERS - copper/aluminum	9
TLAC094601	TRAY - roller cleaning plate, black	9
TLSK000016	GAUGE - tray	9
TLSK000017	GAUGE - hoop height, mylar	9
TLSK000024	GAUGE - trolley roller	9
TLSK000041	SHEET - go/no go roller adjustment	9
TLSK000109	GAUGE - loop solenoid	9
TLSK250056	SCREEN EXTRACTION TOOL	9

Section 3: Alphabetical Index

Alphabetical Index

Part No.	Description	Figure No.
SK000002	AUTOLOOP KEY AY - complete	7
SK000003	AUTOLOOP UPGRADE 2.1.2 - kit	7
SK000014	AUTOLOOP UPGRADE 2.4 - kit	7
SK000034	AUTOLOOP UPGRADE 2.5 - kit	7
SK250045	BELT - timing roller drive	4
SK250040	CABLE - erase lamp sensors to INVERTER	8
SK255005	CABLE - flat, motion to USB	8
SK250027	CABLE - flex, 1300 mm, motion to laser, USB to PMT	8
SK250028	CABLE - flex, motion to LED panel	8
SK250041	CABLE - laser rotation	8
SK250031	CABLE - motion to INVERTER	8
SK250030	CABLE - sensor to motion	8
TL5259	CALIBRATION FILTERS - copper/aluminum	9
SK250004	CIRCUIT BOARD - laser board	2
SK255006	CIRCUIT BOARD - motion	2
SK250025	CIRCUIT BOARD - motor, rotation	2
SK250002	CIRCUIT BOARD - sensor	2
SK255001	CIRCUIT BOARD - USB 2.0, 120/140	2
SK250033	COUPLING - roller motor	4
SK250034	COUPLING - stepper motor	4
SK250042	COVER - back	1
SK250043	COVER - bottom	1
SK255004	COVER - top	1
SK000036	FLAG - cassette present, 24 mm	6
SK250026	FUSE - set	2.9
TLSK000017	GAUGE - hoop height, mylar	9
TLSK000109	GAUGE - loop solenoid	9
TLSK000016	GAUGE - tray	9
TLSK000024	GAUGE - trolley roller	9
SK250019	INVERTER - erase lamps	5
---	LABEL	1
ST095850-02	LABEL - barcode cassette, 10 x 12	9
ST095830-02	LABEL - barcode cassette, 14 x 17	9
ST095870-02	LABEL - barcode cassette, 8 x 10	9
SK255018	LAMP - erase	3
SK240008	LINEAR AY	3
SK000117	LOADER AY - AGFA screens	4
SK000118	LOADER AY - GP screens	4
SK250005	MOTOR - roller	4
SK250006	MOTOR - stepper, linear	4
SK250007	MOTOR - stepper, loader	4
SK250024	OPTICAL HEAD	3
SK250023	PHOTOMULTIPLIER AY	3
AC000111	PLATE - roller cleaning	9
AC094602	PLATE - roller cleaning	9
SK250039	POWER SUPPLY - 12 V DC	5

Alphabetical Index

Part No.	Description	Figure No.
SK250038	POWER SUPPLY - 15 V DC	5
SK250037	POWER SUPPLY - 5 V DC, 12 V DC	5
SK250046	ROLLER - set	4
TLISK250056	SCREEN EXTRACTION TOOL	9
SK250036	SCREW - set	1.9
---	SENSOR - 15 x 30 cassette	7
SK250052	SENSOR - cassette lock, J514	6
SK255003	SENSOR - erase lamp	3.6
SK250016	SENSOR - L-origin J516	6
SK250011	SENSOR - locating Z0 J505, locating Z1 J506, and loader back position J508	6
SK250010	SENSOR - locating Z2 J507, locating Z3 J501, locating Z4 J502, and roller J509	6
SK250015	SENSOR - R-origin J515	6
---	SENSOR - solenoid	7
SK000114	SENSOR - W-zero, J511	6
SK250051	SENSOR AY - cassette present, J513	6
TLISK000041	SHEET - go/no go roller adjustment	9
AC085003	SHIPPING CRATE	9
SK000107	SOLENOID AY	7
SK200025	SPRING - plate guide	6
SK240044	SPRING - set	4
SK200027	SPRING AY - plate guide	6
SK250035	SWITCH - power, line filter, 120/140	5
TLAC094601	TRAY - roller cleaning plate, black	9
AC000110	TRAY - roller cleaning plate, blue	9
SK260026	TRAY AY	1

Section 4: Publication History

Publication Date	Publication No.	ECO No.	Changed Pages	File Name	Description
15SEP06	IP3607-1	---	All	ip3607_1.fm	New Publication
05AUG08	IP3607-1	---	All	ip3607_1.fm	Added AUTOLOOP and updated part numbers. Updated MOTOR - linear drawing.

The Kodak trademark and trade dress are used under license from Kodak.

Printed in U.S.A. • ip3607_1.fm

Carestream Health, Inc.
150 Verona Street
Rochester, NY 14608